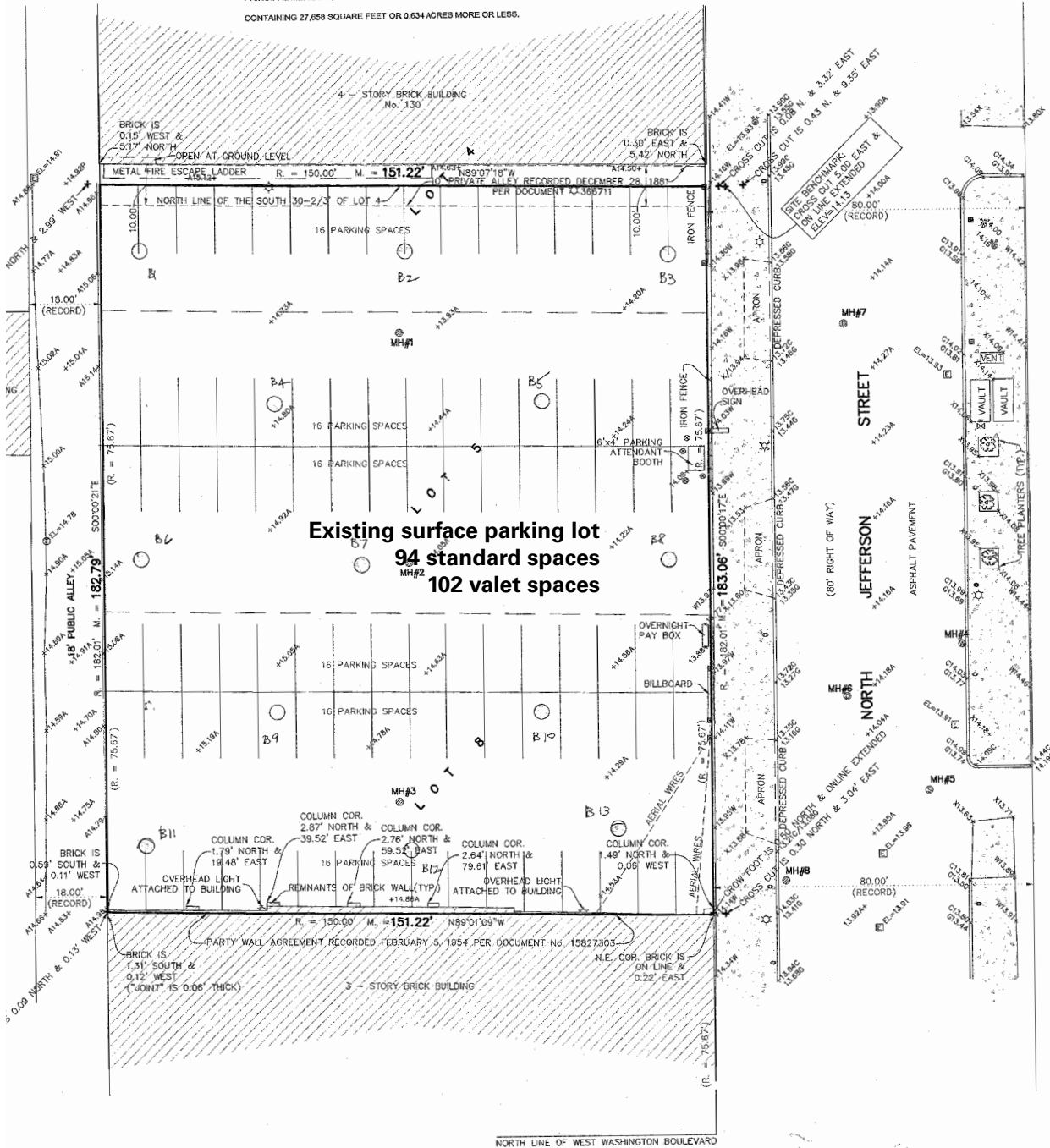


THE SOUTH 30-2/3 FEET OF LOT 4 AND ALL OF LOTS 5 AND 6 IN BLOCK 47 IN ORIGINAL TOWN OF CHICAGO IN SECTION 9, TOWNSHIP 39 NORTH, RANGE 14, EAST OF THE THIRD PRINCIPAL MERIDIAN, IN COOK COUNTY, ILLINOIS.  
CONTAINING 27,658 SQUARE FEET OR 0.634 ACRES MORE OR LESS.



**Existing surface parking lot**  
**94 standard spaces**  
**102 valet spaces**

**EXISTING CONDITIONS PLAN / SURVEY (02.25.08)**

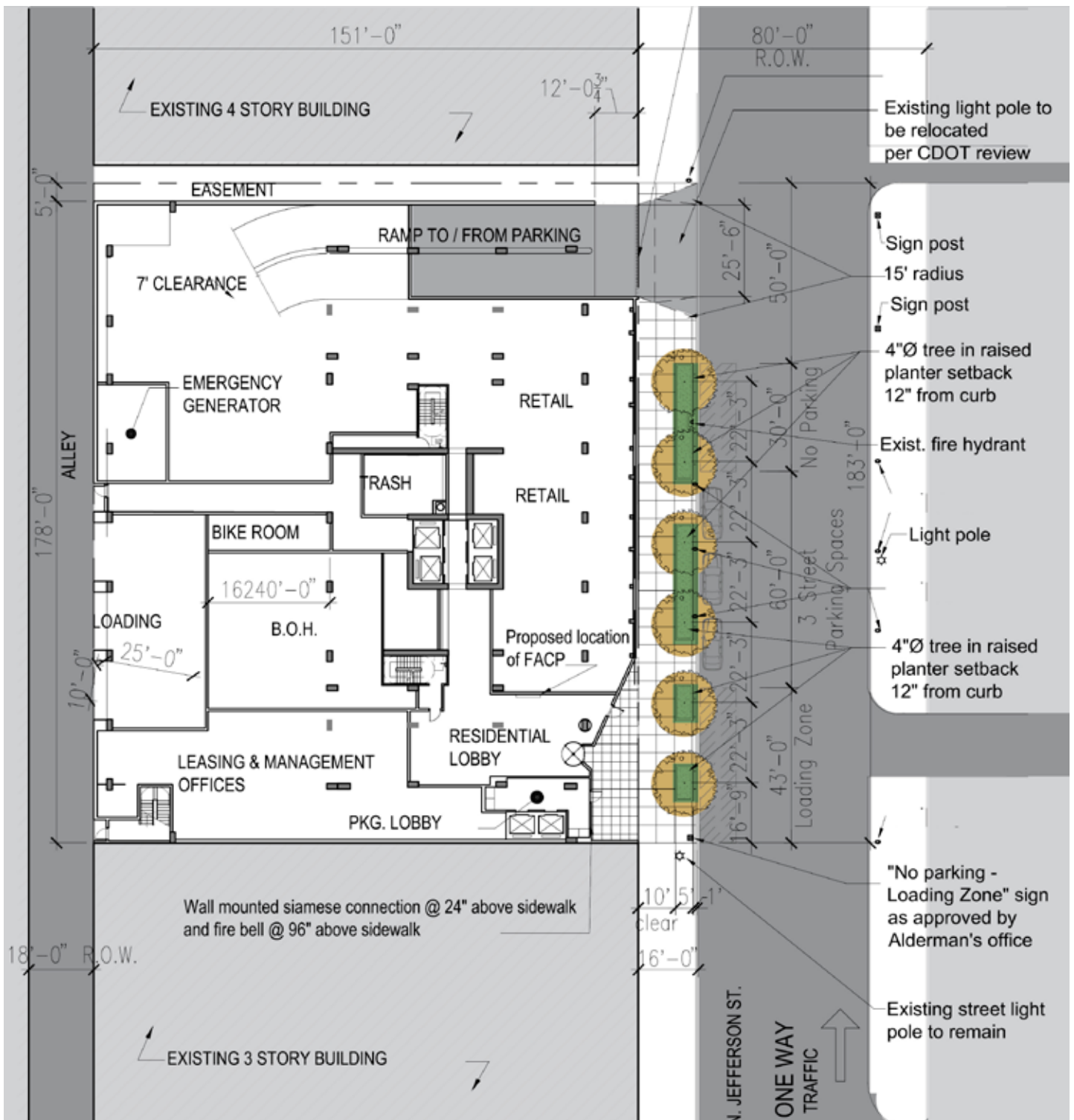


not to scale



© 2009 Solomon Cordwell Buenz

**Applicant:** JRC 108 JEFFERSON LLC  
401 N. Michigan Ave. 13th Floor  
**Project:** 108 NORTH JEFFERSON  
**Date:** 09.10.2008  
**Revised:** 11.19.2009



**GROUND FLOOR / SITE PLAN**

**Applicant:** JRC 108 JEFFERSON LLC  
 401 N. Michigan Ave. 13th Floor

**Project:** 108 NORTH JEFFERSON

**Date:** 09.10.2008

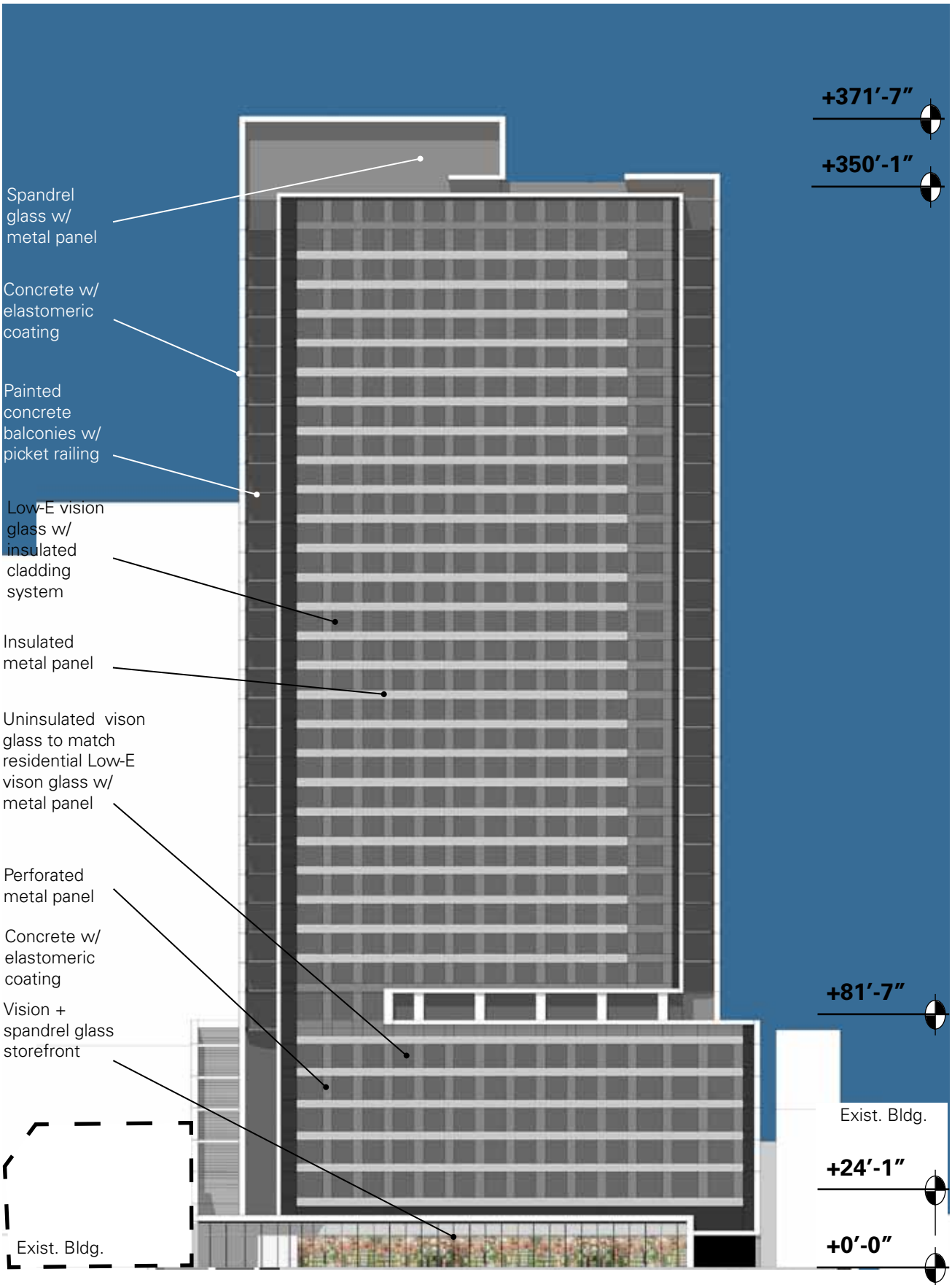
**Revised:** 11.19.2009



not to scale







not to scale

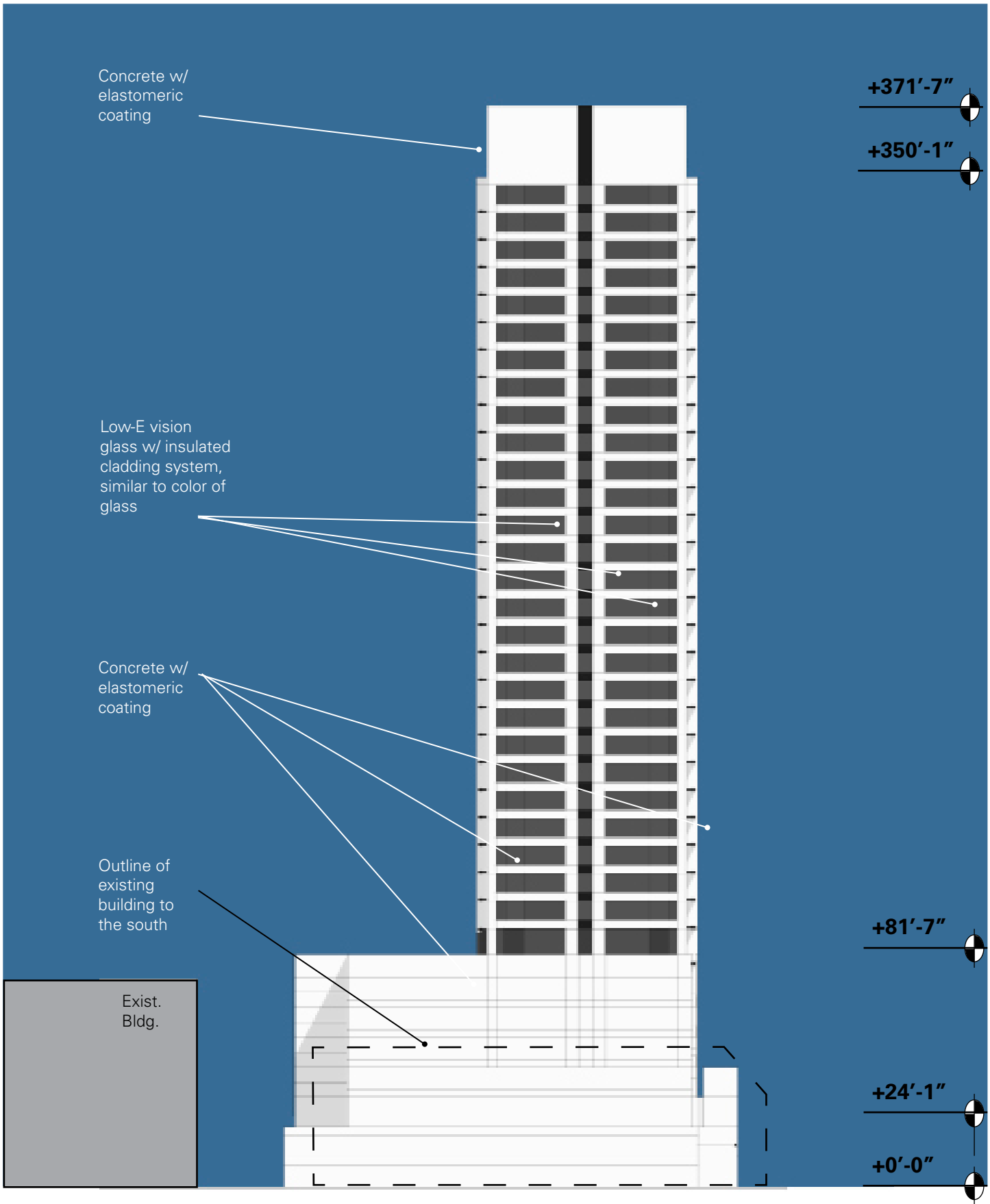
**EAST ELEVATION**

**Applicant:** JRC 108 JEFFERSON LLC  
401 N. Michigan Ave. 13th Floor

**Project:** 108 NORTH JEFFERSON

**Date:** 09.10.2008

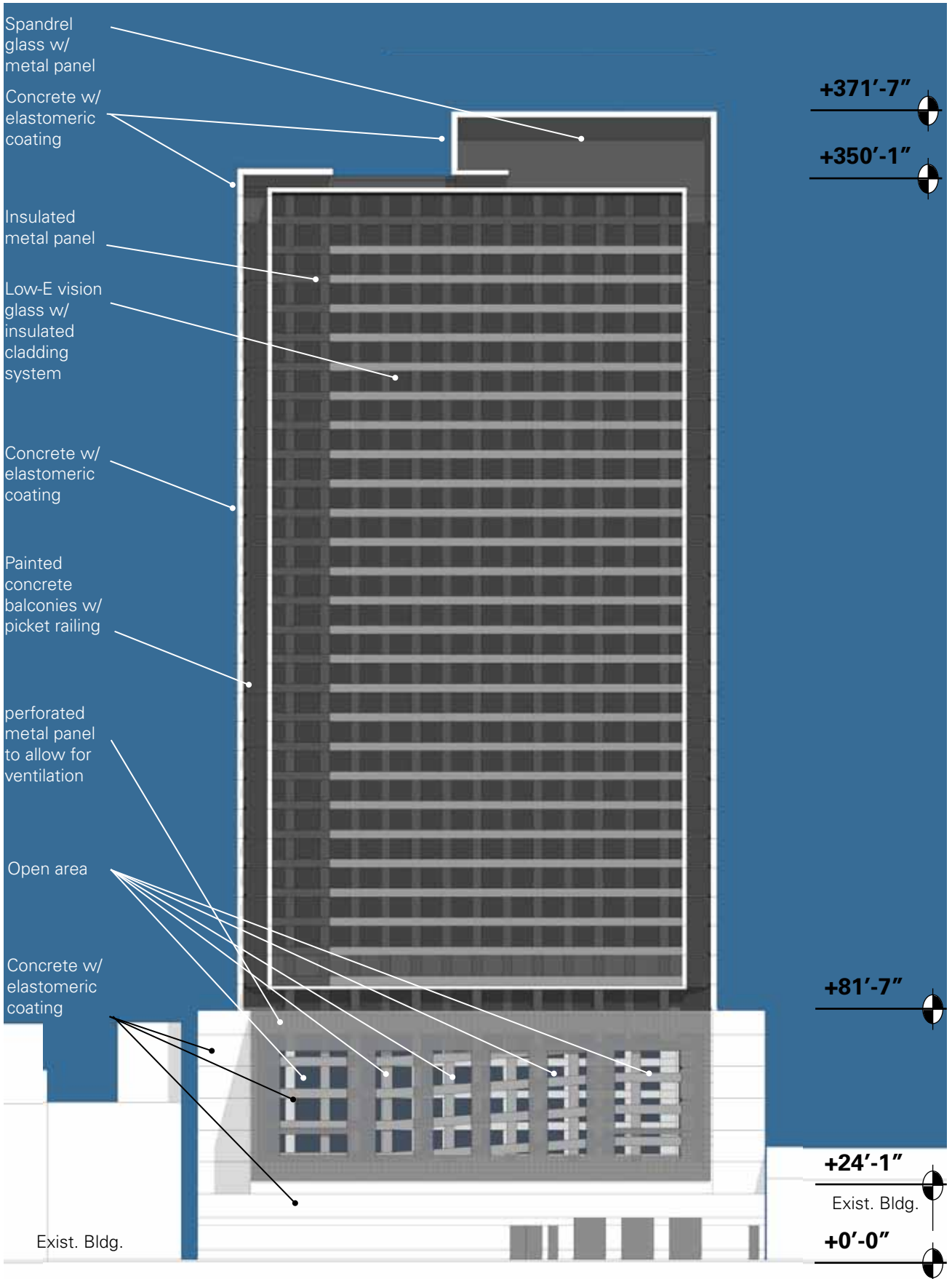
**Revised:** 11.19.2009



not to scale

**SOUTH ELEVATION**

**Applicant:** JRC 108 JEFFERSON LLC  
 401 N. Michigan Ave. 13th Floor  
**Project:** 108 NORTH JEFFERSON  
**Date:** 09.10.2008  
**Revised:** 11.19.2009



not to scale

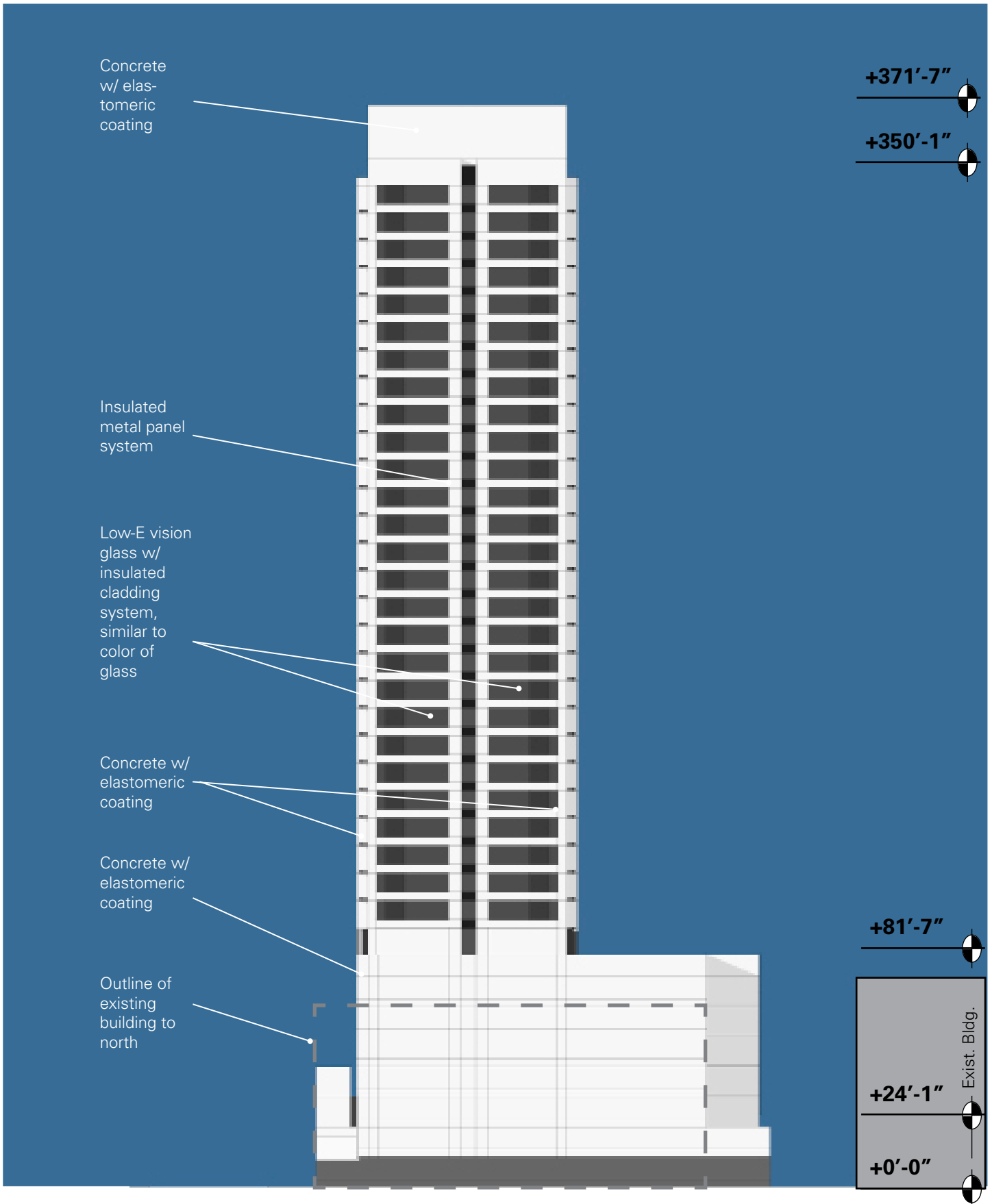
**WEST ELEVATION**

**Applicant:** JRC 108 JEFFERSON LLC  
 401 N. Michigan Ave. 13th Floor

**Project:** 108 NORTH JEFFERSON

**Date:** 09.10.2008

**Revised:** 11.19.2009



not to scale

**NORTH ELEVATION**

**Applicant:** JRC 108 JEFFERSON LLC  
 401 N. Michigan Ave. 13th Floor  
**Project:** 108 NORTH JEFFERSON  
**Date:** 09.10.2008  
**Revised:** 11.19.2009



**PERSPECTIVE FROM THE SOUTHEAST AT NIGHT**



not to scale



© 2009 Solomon Cordwell Buenz

**Applicant:** JRC 108 JEFFERSON LLC  
401 N. Michigan Ave. 13th Floor  
**Project:** 108 NORTH JEFFERSON  
**Date:** 09.10.2008  
**Revised:** 11.19.2009